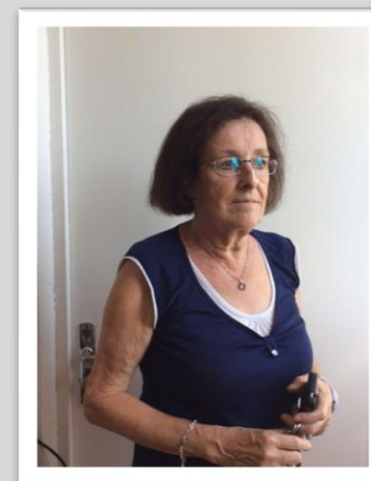


*Année 2016/2017*



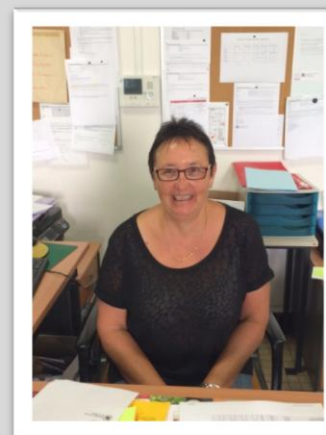
**Alexandra PERRET**  
Chef d'établissement



**Dominique JOURDIER**  
Animatrice en Pastorale



**Valérie CHAROUSSET FUSI**  
Standardiste



**Edith HUGUENET**  
Secrétariat école

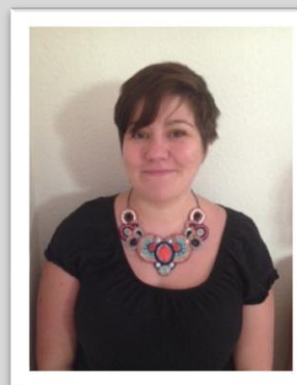
## EQUIPE EDUCATIVE



**Anaïs OUNAROM**  
(Asem PS/cantine/étude)



**Sonia BADJI**  
(Apprentie PS/cantine/garderie)



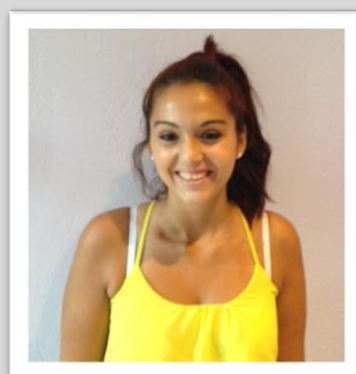
**Camille PINGET**  
(Asem MS/cantine)



**Cynthia di COLAFRANCESCO**  
(Apprentie MS/cantine/garderie)



**Danielle SOURY**  
(Asem TPS/GS)



**Audrey GUILLIN**  
(cantine mat./BCD)



**Amandine CHARVET**  
(cantine maternelle)



**Coline RAFFEGEAU**  
(EVS/cantine élé.)

# EQUIPE ENSEIGNANTE



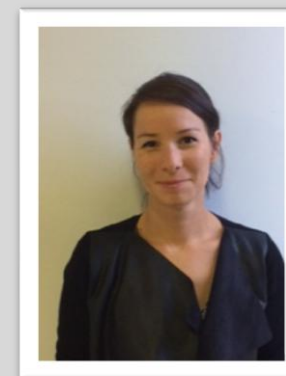
**Laëtitia ROUVERY**  
PS (avec Alexandra PERRET)



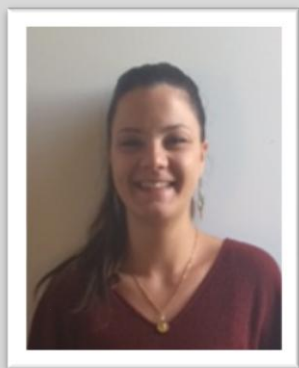
**Jeanne PAILLERET**  
MS



**Gladys DORKEL**  
GS



**Cécile KOWALSKI**  
CP



**Pauline CLAVREUL**  
CE1



**Aurélie da COSTA**  
CE1/CE2



**Céline BOURACHOT**  
CE2

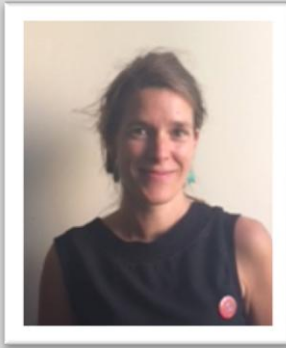


**Véronique SARCEY**  
CM1



**Céline FRIAND**  
CM2

## INTERVENANTS EXTERIEURS



**Julie Mulot**

Chinois

(photo à venir)  
**Ying XI**



**Jérémy CAPUANO**

EPS

AINSI QUE LES ANIMATEURS DES ATELIERS MIDI DEUX et CATECHISTES.